



BIRINGER BUILDERS



ELEVATION A

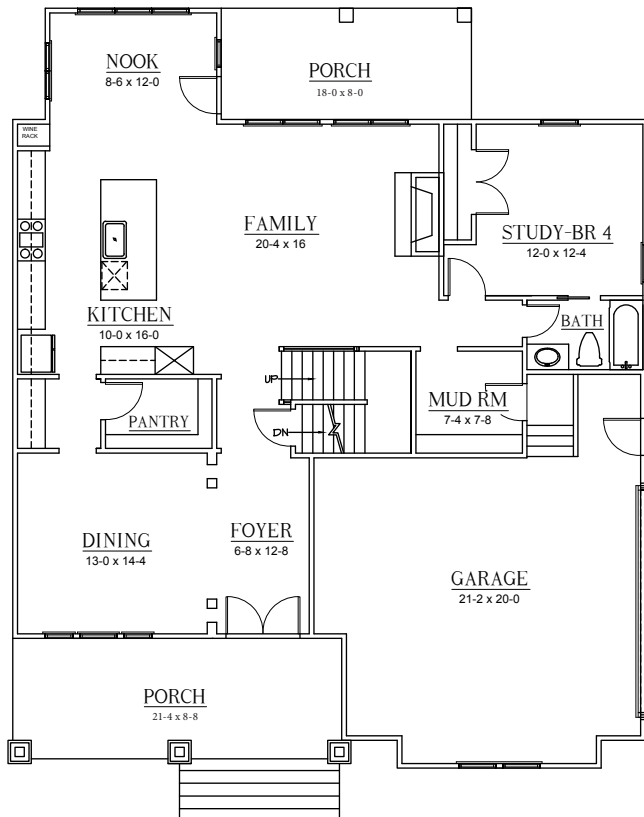


ELEVATION B

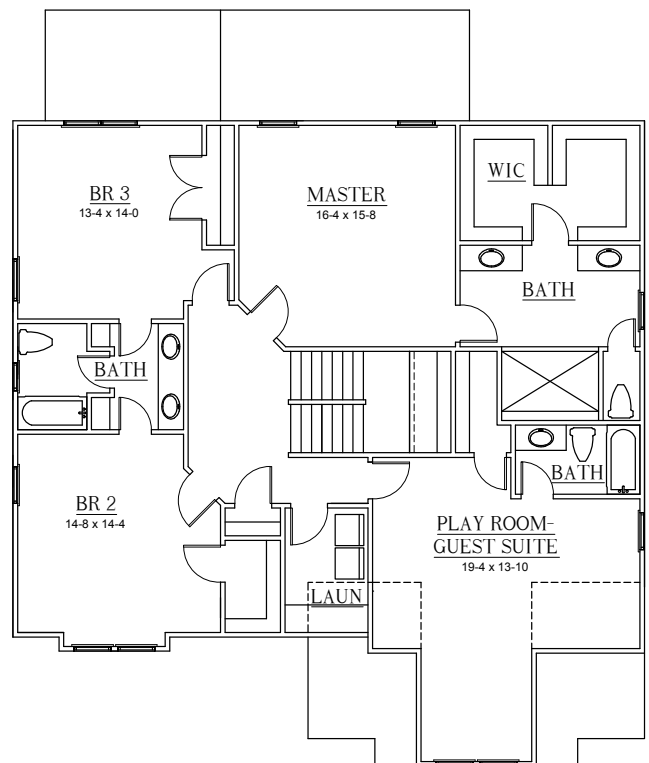
THE SYCAMORE

3,149 SQUARE FEET, 5 BEDROOMS, 4 BATHS,
PLAYROOM/GUEST SUITE, FAMILY ROOM WITH
FIREPLACE, COVERED PORCH, 2-CAR GARAGE

FIRST FLOOR



SECOND FLOOR



*This information is deemed reliable but not guaranteed. All details and illustrations are approximate and may vary from actual plans and specifications.

