



CLOVER V FARMHOUSE

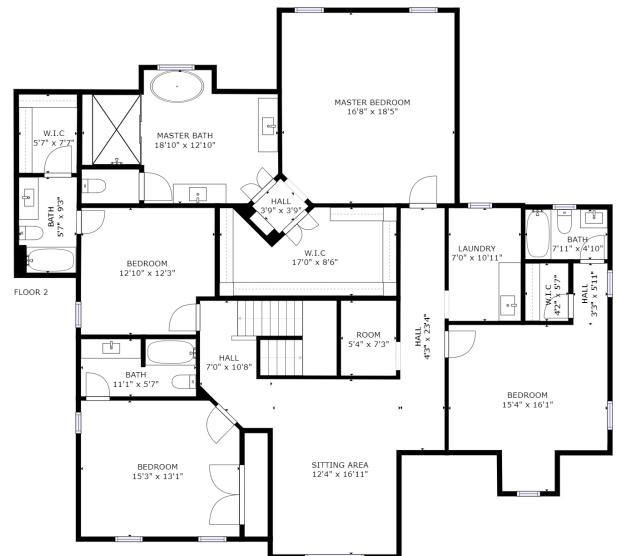
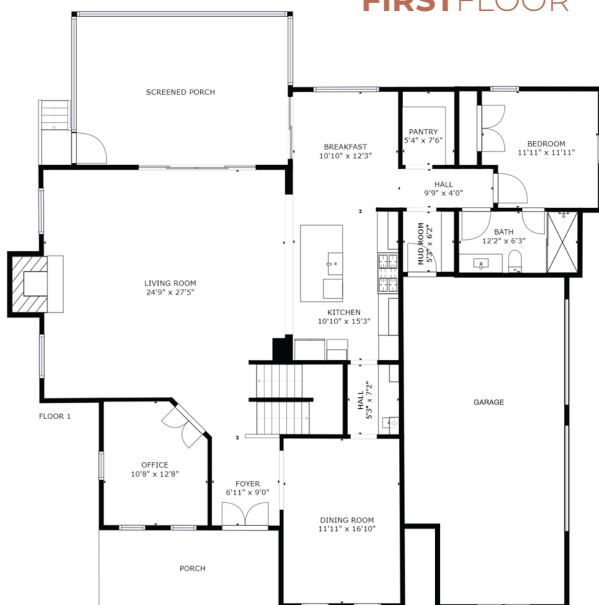
B
BIRINGER
BUILDERS

MORE INFO

3934SQFT **5**BEDROOMS **5**BATHROOMS

OVERSIZED **DINING ROOM**, DESIGNER **KITCHEN WITH NOOK AND BUTLER'S PANTRY**, PRIVATE **STUDY**, HUGE FAMILY ROOM, **FIRST FLOOR GUEST SUITE**, **MASTER SUITE WITH SPA BATH**, SPACIOUS BEDROOMS & **LOFT**

FIRST FLOOR



SECOND FLOOR

*This information is deemed reliable but not guaranteed. All details and illustrations are approximate and may vary from actual plans and specifications. Photo features upgraded exterior selections.



CONTACT US
804.464.3863 | SALES@BIRINGERBUILDERS.COM

CLOVER V FARMHOUSE
BIRINGERBUILDERS.COM