

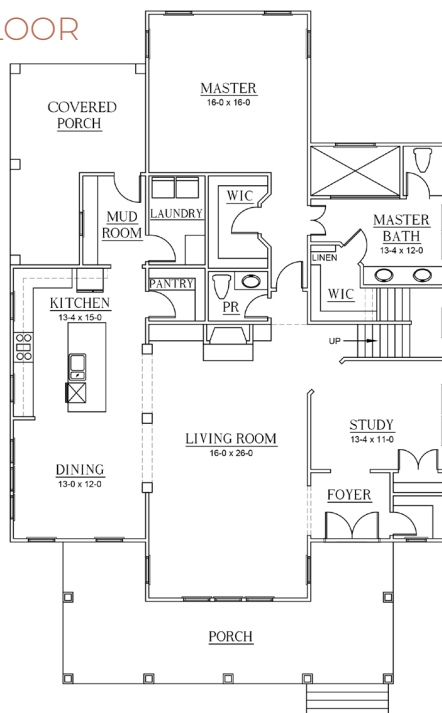


B
BIRINGER
BUILDERS

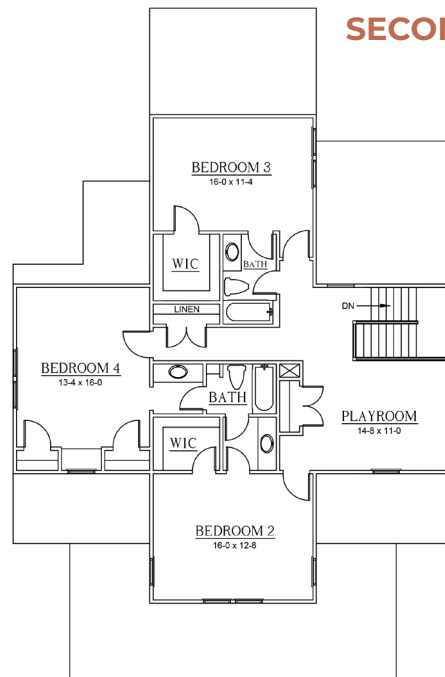
MORE INFO

3280 SQFT **4** BEDROOMS **3.5** BATHROOMS
FIRST FLOOR MASTER, INVITING **FRONT PORCH**, **COVERED** REAR PORCH,
STUDY, LARGE DINING AREA IN **KITCHEN**, SECOND LEVEL **LOFT**,
DETACHED 2-CAR GARAGE

FIRST FLOOR



SECOND FLOOR



*This information is deemed reliable but not guaranteed. All details and illustrations are approximate and may vary from actual plans and specifications. Photo representative of home to be built.

CONTACT US
 804.464.3863 | SALES@BIRINGERBUILDERS.COM

MAPLE
 BIRINGERBUILDERS.COM