

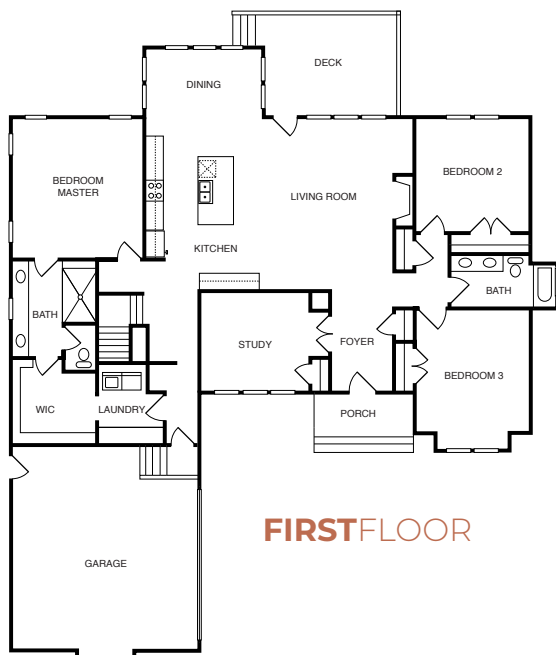


**B**  
BIRINGER  
BUILDERS

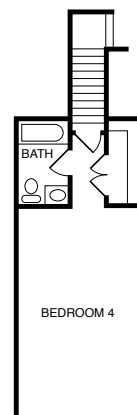
**MORE INFO**

**2665**SQFT **4**BEDROOMS **3**BATHROOMS

CHARMING **FARMHOUSE COTTAGE**, MAIN LEVEL LIVING WITH **SPACIOUS MASTER SUITE**, SUNLIT **STUDY**, LARGE LIVING ROOM WITH **DESIGNER KITCHEN** AND DINING NOOK OPENS TO **OUTDOOR LIVING SPACE**, TWO ADDITIONAL BEDROOMS ON FIRST FLOOR, **SECOND FLOOR PRIVATE GUEST SUITE** WITH FULL BATH



**SECOND FLOOR**



\*This information is deemed reliable but not guaranteed. All details and illustrations are approximate and may vary from actual plans and specifications. Photo representative of home to be built.

CONTACT US  
804.464.3863 | SALES@BIRINGERBUILDERS.COM

**SNOWBELL**  
BIRINGERBUILDERS.COM