



SPRINGMILL

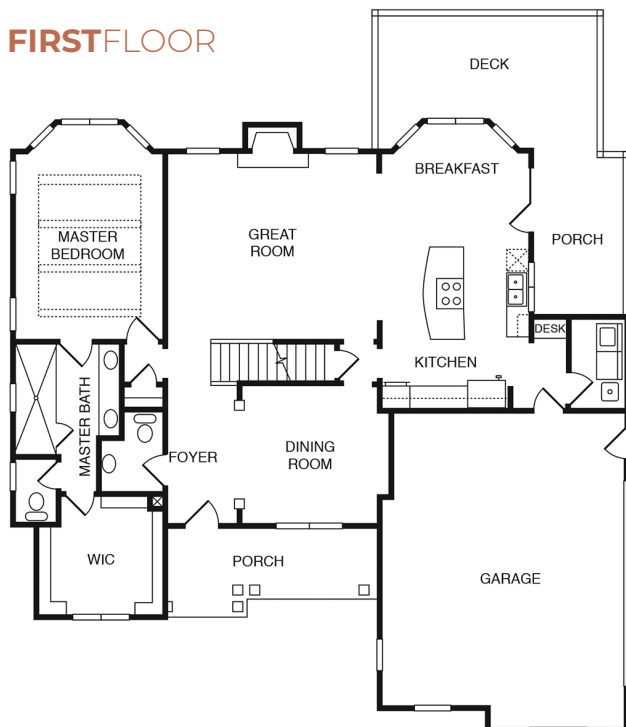
B
BIRINGER
BUILDERS

MORE INFO

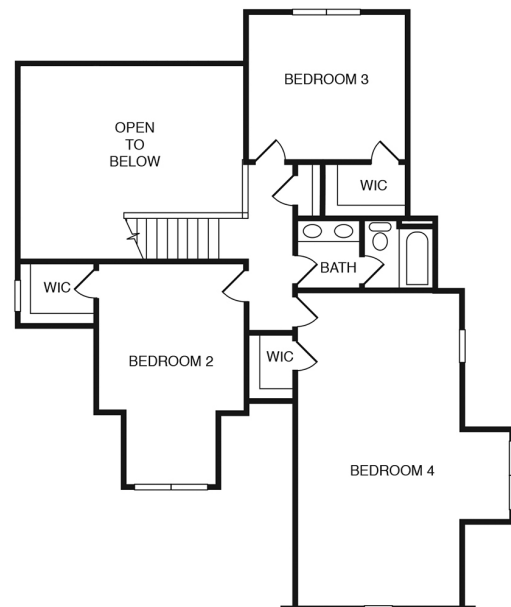
2600SQFT **4**BEDROOMS **2.5**BATHROOMS

FIRST FLOOR **MASTER SUITE**, GREAT ROOM WITH **VAULTED CEILING**, GOURMET **KITCHEN WITH BREAKFAST NOOK**, PRIVATE **SCREEN PORCH** AND REAR DECK, **3 BEDROOMS** & FULL BATH ON SECOND LEVEL

FIRST FLOOR



SECOND FLOOR



*This information is deemed reliable but not guaranteed. All details and illustrations are approximate and may vary from actual plans and specifications. Photo representative of home to be built.



CONTACT US
804.464.3863 | SALES@BIRINGERBUILDERS.COM

SPRINGMILL
BIRINGERBUILDERS.COM