



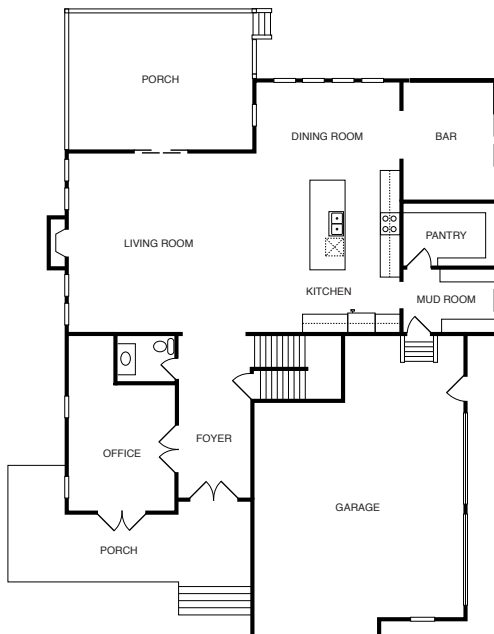
**B**  
BIRINGER  
BUILDERS

## MORE INFO

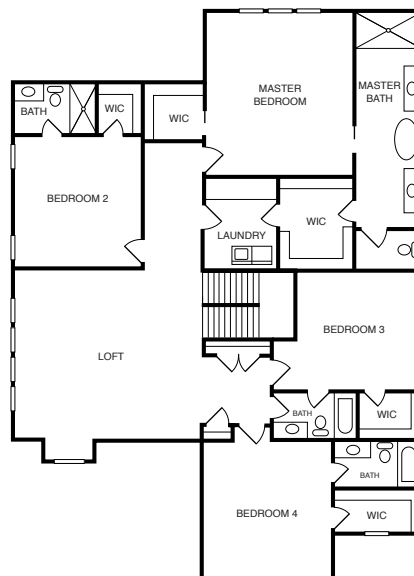
**3938**SQFT **4**BEDROOMS **4.5**BATHROOMS

**WRAP-AROUND FRONT PORCH, GRAND KITCHEN W/WALK-IN PANTRY, SEPARATE BAR ROOM, COVERED REAR PORCH, 2ND FLOOR MASTER W/SPA BATH, 3 ADDITIONAL BEDROOMS WITH OWN BATHS, LARGE LOFT**

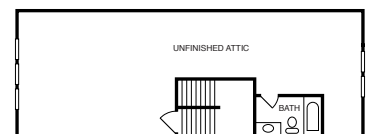
## FIRST FLOOR



## SECOND FLOOR



## THIRD FLOOR



\*This information is deemed reliable but not guaranteed. All details and illustrations are approximate and may vary from actual plans and specifications. Photo representative of home to be built.

CONTACT US  
804.464.3863 | SALES@BIRINGERBUILDERS.COM

**WISTERIA**  
BIRINGERBUILDERS.COM