



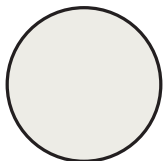
# B BIRINGER BUILDERS

2005 SOUTHCLIFF ROAD, RICHMOND, VA 23225

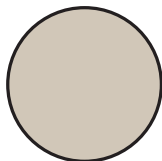
3044SQFT · 4BEDROOMS · 3.5BATHROOMS · \$1,350,000

Enjoy the ease of a **first-floor primary home**, perfect for everyday living. The open concept flows seamlessly from the designer kitchen to the dining room and family room. The family room opens **onto a covered porch**, creating the ideal space for entertaining or relaxing outdoors. A **spacious mudroom off the 2-car garage** keeps things organized and tidy. Upstairs, you'll find **3 generously sized bedrooms**, **two full baths**, and a versatile **loft area**—ideal for a home office or playroom.

## PAINTSELECTIONS SHERWIN WILLIAMS



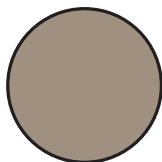
**ALL OVER COLOR**  
SW PURE WHITE



**PRIMARY BR CEILING**  
SW ACCESSIBLE BEIGE



**NOOK WALL AND  
MUDROOM**  
SW PEWTER GREEN



**POWDER ROOM**  
SW MOTH WING

## CABINETSELECTION

**KITCHEN** - KOCH WINDSOR SHOJI WHITE AND WOOD HOOD

**BATHROOMS** - KOCH WINDSOR PAINTED

Primary Bath - Accessible Beige

Jack & Jill Bath - Black

Bedroom 3 Bath - Accessible Beige

**LAUNDRY** - WINDSOR EVERGREEN FOG

## APPLIANCESELECTION

**KITCHEN** - JENN AIR GAS RANGE WITH 6 BURNERS

JENN AIR DISHWASHER

JENN AIR MICROWAVE DRAWER

**BUTLERS PANTRY** - BEVERAGE REFRIGERATOR

## FLOORINGSELECTION

**ALL OVER**

HALLMARK NOVELLA TWAIN

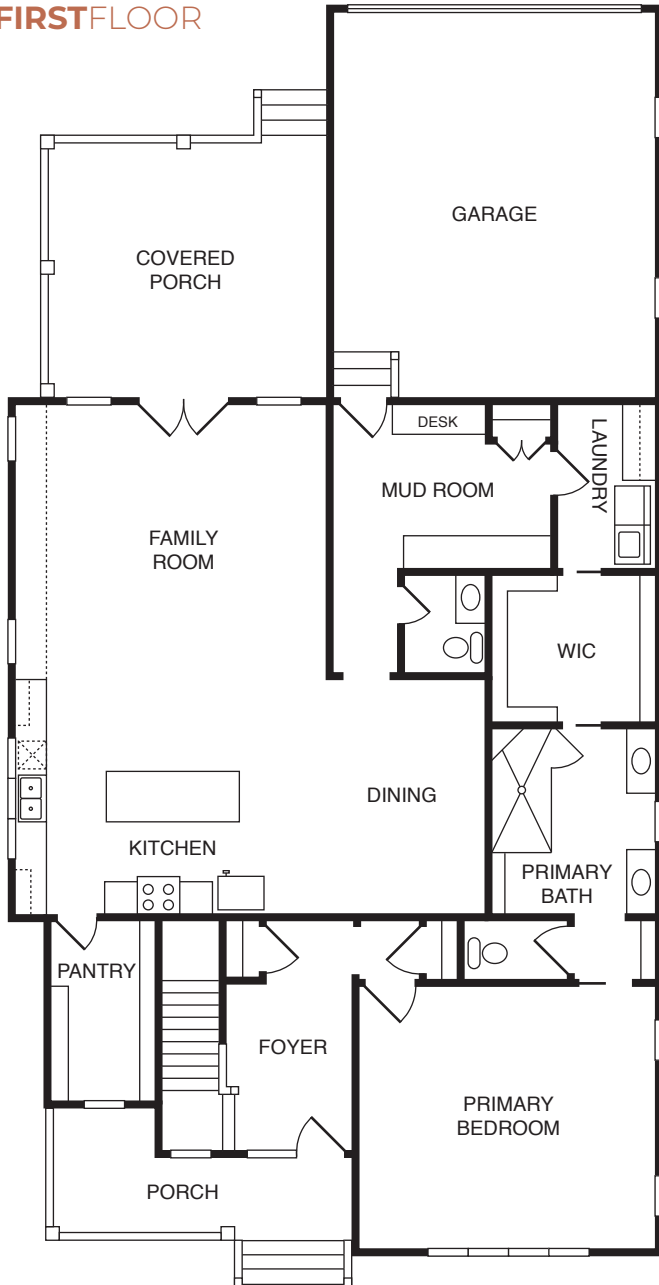
\*This information is deemed reliable but not guaranteed. All details and illustrations are approximate and may vary from actual plans and specifications.



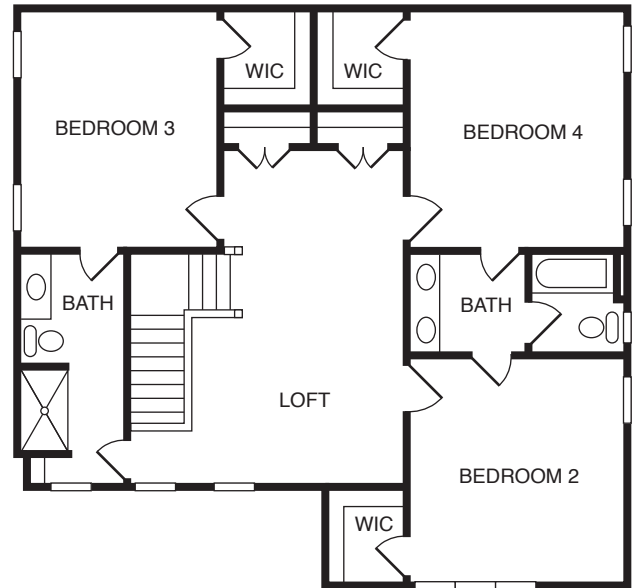
CONTACT US

804.464.3863 | SALES@BIRINGERBUILDERS.COM | BIRINGERBUILDERS.COM

## FIRST FLOOR



## SECOND FLOOR



\*This information is deemed reliable but not guaranteed. All details and illustrations are approximate and may vary from actual plans and specifications. Photo representative of home to be built.



CONTACT US

804.464.3863 | SALES@BIRINGERBUILDERS.COM

BIRINGERBUILDERS.COM